

Lessons from The Fukushima Accident

Richard A. Meserve
Senior Of Counsel
Covington & Burling LLP

Great Tōhoku Earthquake of 2011

Inedit photo



Earthquake

March 11, 1446 Hours JST

Magnitude 9.0

~32 km (20 mi) deep

~70 km (45 mi) offshore

Max. Ground Displacements

4.4 m (17 ft) ESE horizontal

-75 cm (-30 in) vertical

Tsunami

Maximum wave height: ~30 m
(98 ft)

Maximum run up: ~10 km (6 mi)



Reuters

Reuters

14,662 people killed
11,019 people missing
>100,000 buildings collapsed
>225,000 buildings damaged

National Police Agency of Japan
As of April 30, 2011



EPA

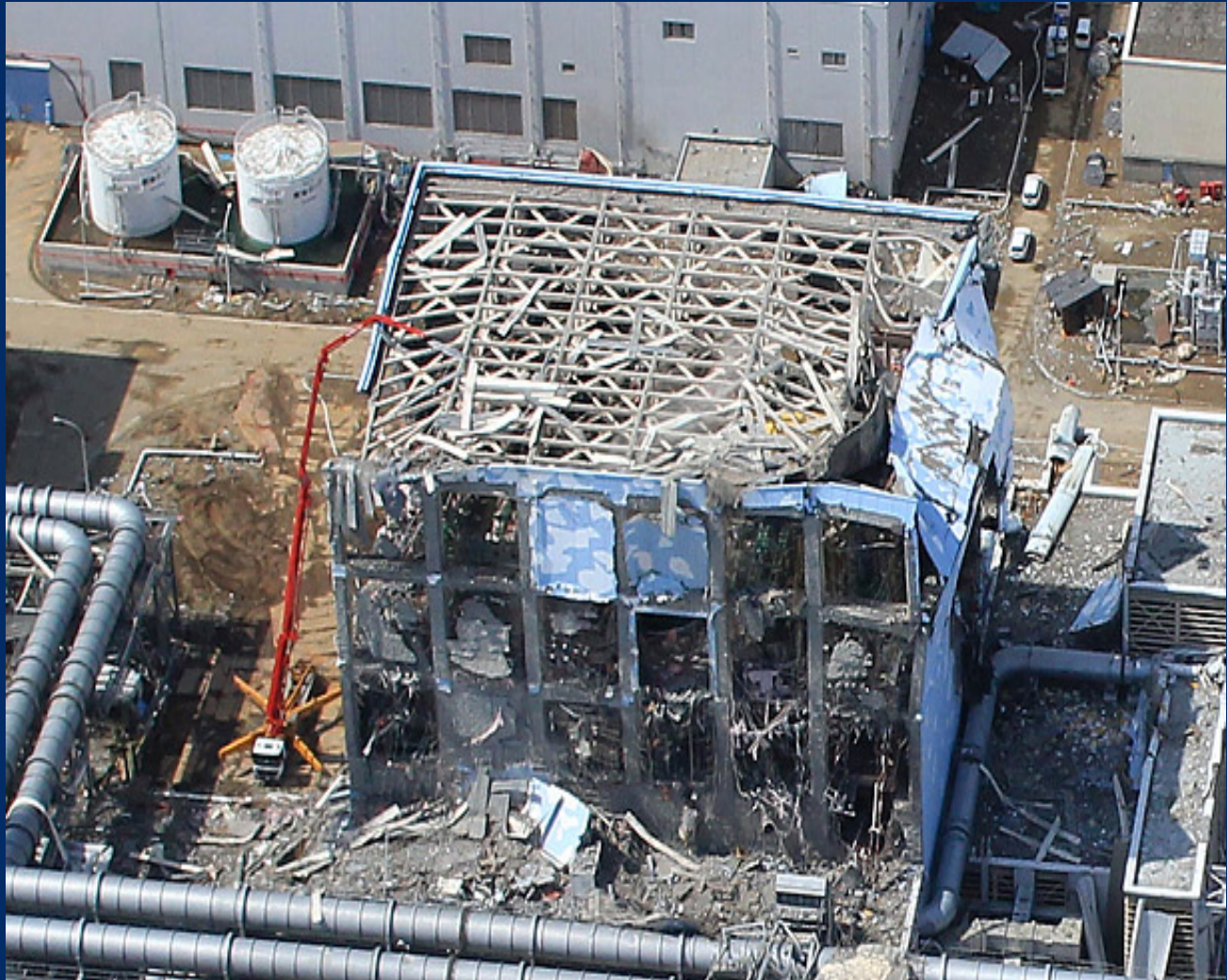


Kyodo-Reuters

Fukushima Daiichi Plant



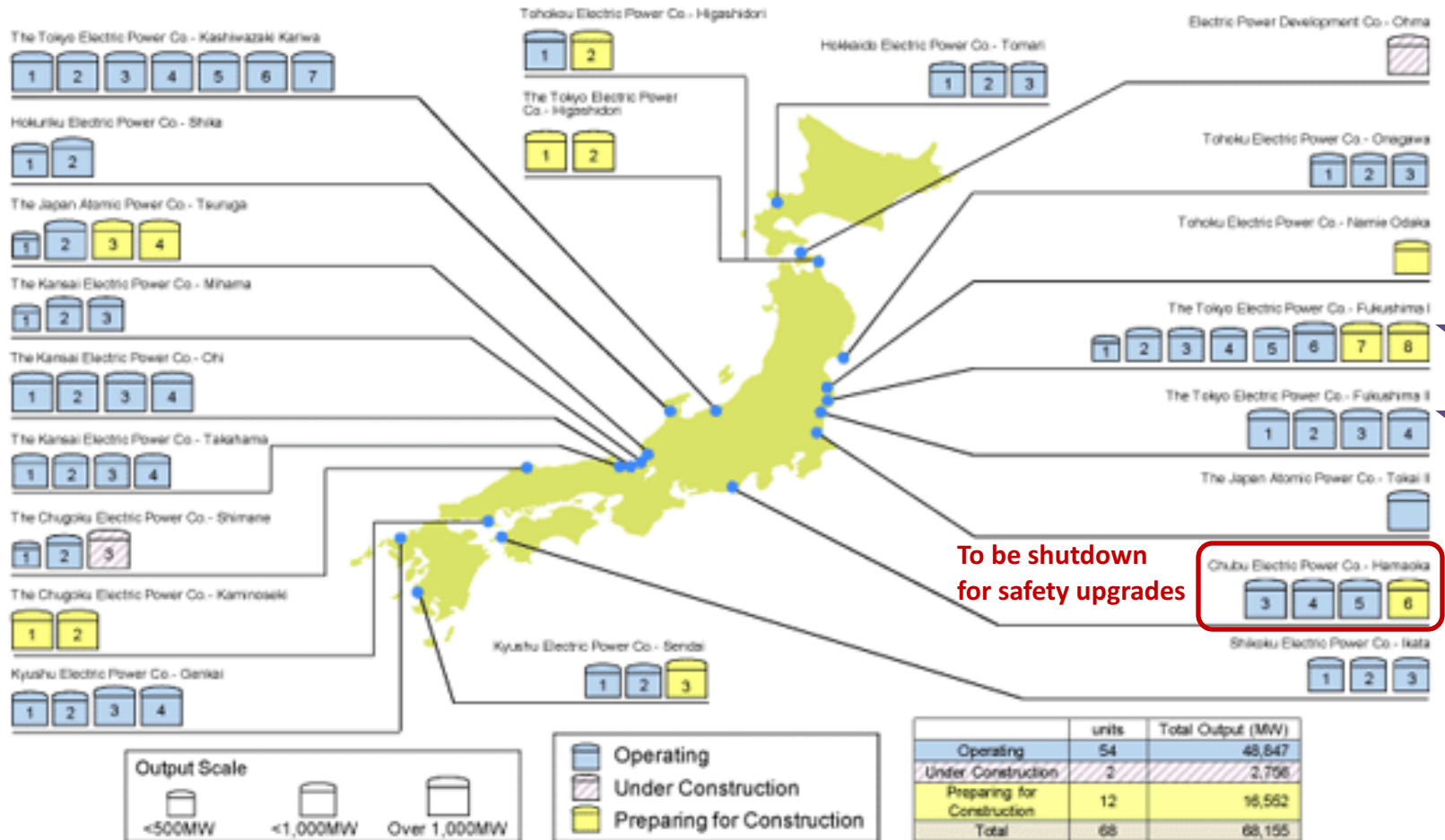






Nuclear Power Plants in Japan

(Commercial Plants, as of the end of March 2010)



(Note) End of Operation: The Japan Atomic Power Co. - Tokai (March 31, 1998) / Chubu Electric Power Co. - Hamaoka reactors 1 and 2 (January 30, 2009)

Responses

- Defense against External Events
- “Soft Lessons”
 - Operator Responsibility
 - Competent, Independent Regulator
 - Incorporation of Risk Management
 - Centrality of Safety Culture